



**St SWITHINS**  
LINCOLN

&

**St FAITHS**  
LINCOLN

# PARISH PROFILE

## Training Curate



Love



Live



Go

# ABOUT US

ST. SWITHIN'S WAS RELAUNCHED IN OCTOBER 2014 BY A TEAM SENT BY HOLY TRINITY BROMPTON, AT THE INVITATION OF THE BISHOP OF LINCOLN. PLANTED IN THE CENTRE OF LINCOLN AND A CITY CENTRE RESOURCE CHURCH. ONE OF THE 3 RESOURCE CHURCHES IN THE DIOCESE, WE HAVE PLANTED INTO ST. MARK'S, GRIMSBY (Sept 2021) AND WE HAVE ALSO DEVELOPED A REVITALISING PARTNERSHIP WITH ST/ FAITH'S LINCOLN (Easter 2022). THERE ARE PLANS TO PLANT AGAIN IN THE NEXT 12 MONTHS.

WE ARE NOW A LIVELY AND GROWING COMMUNITY, WITH A VARIETY OF AGES MEETING ACROSS TWO CHURCHES (St. Swithin's & St. Faith's) AND 5 SUNDAY CONGREGATIONS.

NOW, WE ARE LOOKING FOR SOMEONE TO COME AND JOIN THE TEAM TO PLAY THEIR UNIQUE PART IN THE NEXT CHAPTER, WHILST BENEFITTING FROM THIS UNIQUE AND EXCITING TRAINING CONTEXT.

# MISSION

OUR MISSION IS TO SEE people encounter the **LOVE** of God, learn to **LIVE** more like Jesus and **GO** in the power of the Holy Spirit to see **LIVES AND COMMUNITIES TRANSFORMED**.

# VISION

OUR VISION IS TO SEE EVERYONE PLAYING THEIR UNIQUE PART TO: -

- \* REACH LIVES AND COMMUNITIES WITH THE GOOD NEWS OF JESUS
- \* RELEASE DISCIPLE MAKING DISCIPLES
- \* REVITALISE THE CITY AND REGION

# VALUES

**HOME** - Marked by Generosity and genuine welcome. We want to be a place everyone can call home. Where people feel connected and a part of the family on Sunday and beyond.

**REAL** - What you see is what you get! We are real with one another. We don't seek uniformity but unity. We do what we say we will do. We take God seriously but we don't take ourselves too seriously.

**COURAGE** - We may be fearful, but we will do it anyway, going deeper and further than before, calling out the courage in one another to live for Jesus.



# A RESOURCE CHURCH

As part of a bold new diocesan programme to resource the urban church, funded in part by the national church's Strategic Development Fund, the Bishop of Lincoln designated St Swithin's as one of three urban centre churches in the diocese to become "resource churches" : alongside St George's Stamford and St. Wulfram's, Grantham. These churches begin to cover the large geographical area, and represent the variety in Anglican traditions present, across the 630 parishes and the eleven urban centres of the Diocese of Lincoln. As resource churches, we have been given a specific mandate to reach other urban centres, strengthening churches across the diocese and facilitating the diocesan strategy for church planting.

We are also categorised as a 'Key Mission Church' as part of the Diocesan strategy 'Time to Change Together'. As such we are committed to playing our part in the Lincoln Deanery Partnership and in the Diocese as we develop new ways to shape and resource mission and ministry together across the region.



**A Time to Change Together**

Resourcing Sustainable Church

We also continue to work in partnership with our small family of churches connected to the HTB network, both locally and nationally.

# A CHURCH FOR THE CITY...

St Swithin's is a vibrant and growing Anglican church in the Diocese of Lincoln. Our story so far is one of God's faithfulness. After dwindling to just a handful of faithful parishioners in 2014, St Swithin's was identified by the Diocese as a potential location for a city centre resourcing church and, at the invitation of the Bishop of Lincoln, a team from Holy Trinity Brompton were invited to plant into St Swithin's. The plant team of 18, which included 6 sent from Alive church in Lincoln, officially re-launched St Swithin's in October 2014, with 30 people attending the first service. Since then we have seen significant growth and current attendance averages around 230 adults and 70 youth and children with a regular online congregation too.







The Historic city of Lincoln is dominated by Lincoln Cathedral, one of the finest medieval buildings in Europe, which is a prominent landmark for miles around. Situated in Uphill Lincoln along with Lincoln castle and many shops and cafes in the Bail, it is a hotspot for many tourists who make their way up the cobbled and imaginatively named 'steep hill' to visit this part of the city.

With a population of just under 100,000, Lincoln is a smaller city but has everything a city needs and many people from students to military personnel from the many bases in Lincolnshire make their home there, with many in the surrounding villages looking to the city. There is a good choice of schools including church of England schools, a further education college and 2 universities.

St. Swithin's itself is located in the 'Below Hill' area which has been a thriving commercial centre since the Roman legions came. Filled with shops and restaurants, this part of the city centre has benefitted and developed hugely from the growth and expansion of The University of Lincoln (a relative newcomer to Lincoln's oldest University - Bishop Grosseteste) over the past 15 years.

St. Swithin's parish is small (but includes within it, Lincoln College) but the church has a remit to be a resource church and gathers people from the city and beyond..

Due to various building issues, we vacated the church building in Dec 2017 and after being nomadic for over 2 years, we moved into 'The Salt House', a large building opposite the church at Easter 2020. This building is part refurbished and work is currently taking place to bring the old ballroom into use as our main worship space. This building is providing a fantastic ministry, mission and church planting for the years to come as well as an exciting venue increasingly used by many groups and organisations across the city.



*The 'old ballroom'  
about to be refurbished*

We work with churches across the city, regularly meeting to pray, support and encourage one another in the work we are doing. 'Transform Lincoln' has seen positive ecumenical work and partnership develop over the last 10 years, especially in the area of social transformation.

# A LOCAL CHURCH

Easter 2021 saw us partner and graft into St. Faith's Church. St. Faith's parish neighbours that of St. Swithin's and includes the 'West End' of Lincoln where there is a real sense of local community and also a significant amount of student houses. There are 2 schools whom we work closely with and St. Faith's has the potential to be a thriving local parish church. Over the last 2 years, we have worked hard to welcome the community into the church through various community events ranging from 'West End Lights' at Christmas and a popular beer festival with live music, to Holiday clubs and our new after school club, 'stay toasty'. We are currently planing a building project to make the church more accessible and welcoming. The clergy and staff team work across the 2 churches and increasingly the congregations across the 2 churches, whilst retaining their own identity are getting involved in mission and ministry together. We talk about 1 family, 2 churches and are beginning to explore how we may be even closer joined in the future.



# SERVICES

**ST. SWITHIN'S 9:15** - This is a weekly, half hour service specifically aimed at under 5's and their families. Interactive with time to worship, pray and grow together, we have seen this service grow over the last couple of years and we are keen to see more of our families from Babyccinos (our babes and toddler group) come and find a home there.

**ST. SWITHIN'S 10:15** - This lively and contemporary service is our largest congregation. An Intergenerational congregation with a 'Worship For Everyone' style each week. Over the last 18 months, we have been really excited to see people of all ages worshipping and praying together.

**ST. FAITH'S 10:15** - This weekly Eucharist in a more traditional setting has been gently growing over the past 18 months with a mixed congregation. Over the next 12 months, we are exploring how we develop a blend of the sacramental and charismatic and reach out to the West End of Lincoln.

**ST. FAITH'S 4:15** - This (currently) monthly congregation was planted with the aim of building on the positive relationship with the 2 C of E primary schools in the parish and seeking to reach out to the many families in the West End of Lincoln. There is a 45 minute 'Worship For Everyone' style service followed by crafts, games, activities and food. On a 'normal' week, we are seeing up to 100 come and worship with us with the majority being new to church. We build around events and festivals where we can and our 'fireworks' and Christmas services see up to 350 pack out the church.

**ST. SWITHIN'S 6:15** - Mainly (but not exclusively) attended by students and young adults. This Evening Worship service allows more focus and space for worship, teaching and ministry.

Our Worship and AV teams play a key part in these services as well as our regular KINGDOM COME evenings of prayer and worship and of course supporting other ministries.





# MISSION & MINISTRY

There are a variety of mission and ministry activities that we focus on as a Church that seek to help people encounter the LOVE of the Father, learn to LIVE more like Jesus and GO in the power of the Spirit to see lives and communities transformed. Below is an overview of the key areas we focus on.

## ALPHA

The Alpha course plays a key role in the mission and discipleship of St. Swithins as not only is it a great tool for those exploring questions of life and faith, but it also acts as a great leadership development tool. We run a central Alpha course 3 times a year as well as running youth alpha, prison alpha, and supporting our students and young people running alpha in schools, college and university.

We have recently received some funding to help us focus on seeing more 18-25's engage with Alpha.



## LOVE YOUR NEIGHBOUR



Shaped during and out of the pandemic, under the Umbrella of LYN we run a variety of services, courses and activities that seek to work with and alongside the local community and other organisations to see lives and communities transformed. This includes running a thriving drop in cafe and a mental health crisis cafe on a Saturday evening in partnership with the NHS and other

churches across Lincoln. We also continue to run a food depot, and at Christmas and Easter deliver hundreds of bags of kindness. We also offer a variety of courses such as the CAP money course and Kintsugi Hope. Following a successful funding application to the local council, we have also recently launched 'stay toasty' in the west end of Lincoln - St. Faith's opens up after school providing a space for families with crafts, games, and other activities and of course refreshments and toast (!) with toppings for children and their families.

# RISING GENERATIONS



Over the last 3 years, we have been exploring and developing a more intergenerational model for our Sunday gatherings and have moved away from the traditional 'Sunday School' model. Alongside this, we build a range of ministries, programmes, events and resources for the different age groups and family situations. This ranges from age specific 'connect time' on a Sunday between the 9:15 and the 10:15, Babycinnos (our babes and toddlers group), family breakfast,

kids socials, holiday clubs, midweek youth groups, open youth clubs, youth residential and socials. We also work in several schools delivering collective worship, lessons and clubs and we run a chaplaincy in the common room of Lincoln College. We are passionate that our children and young people encounter the love of Jesus and filled with the Spirit get involved in the life and leadership of St. Swithin's and are equipped in their schools and with their peers to see lives and communities transformed.



## 18 - 25s

St. Swithin's has a great and growing community of young adults including but by no means exclusively students (from the 2 universities in our city). We are passionate about building a community of disciple making disciples who support one another to become everything God wants them to be. We are seeking to find new ways to reach out and share Jesus with those around us whether through throwing great parties (e.g. the epic silent disco at Lincoln Cathedral) to invite friends to or through serving those who are most vulnerable in our city - we want to be a community that makes a difference.





# MIDWEEK GROUPS

Through the week, we have a number of smaller groups of people that meet in various venues in and around Lincoln and online too. The format of these groups varies from group to group. Some use the previous Sunday's sermon as a springboard to study, pray and worship together, others might go through courses such as the prayer course or God at work. Others are gathered around specific demographics, e.g. 18-25's or young professionals or families. Others have a missional focus, for example speaking to students on campus. We also run other courses such as the marriage course, parenting course or Kintsugi Hope. From these groups, we encourage people to meet in smaller groups for prayer and we are developing how we can resource people in this.

# LEADERSHIP DEVELOPMENT

We currently run a Leadership Development Year programme with a cohort of 5 students per year. We often have ordinands training at St. Mellitus or St. Hilda's with us and we are a training church for curates. (including planting curates). In addition to this and with the recent appointment of a Leadership Development Manager we are developing ways of developing and training leaders (in particular young leaders). It is hoped that as well as raising and developing leaders to lead in all sectors of society, this will also help provide a planting pipeline for church planting teams. There are also lots of opportunities for the staff team to grow in their leadership through regular supervision, attendance at a variety of training and network events and through in-house and brought-in training.





# STAFF TEAM

Our current staff team working across St. Swithin's & St. Faith's and helping support church planting are made up of a variety of full, part time and unpaid roles



Rev. Canon Jim Prestwood | Vicar  
Vicky Prestwood | WFE lead pastor



Rev. Ben Brady | Associate Vicar



Rev. Juliette Willis | Planting Curate.



Rev. Ben Willis | Planting Curate



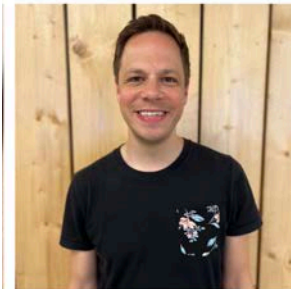
Rev. Victoria Lawrence | Curate



Beth Glenfield | Alpha & Leadership Development Manager



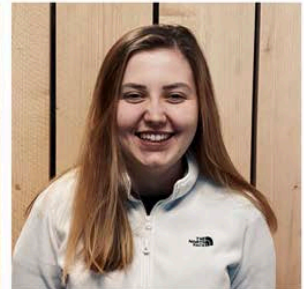
Ruth Cook | Head of Operations & Development



Paul Epton | Love Your Neighbour Manager



Mads Baker | 18-25s Pastor



Kath Marsden | Youth outreach Pastor & Digital Media



Rev. John Birkett | Curate (Caleb Stream)



Sue Watt | Parish Administrator



Rose Williams | Finance Assistant



Susie Williamson | Office Assistant



Richard Jackson | Caretaker



Harry Tyrrell | LDY student



Michael Clarke | LDY student



Emily Rosemeyer | LDY student



Rev. Cameron Watt | Assistant Priest



Fran Bell | Ordinand



Andrew Dawson | Planting & Strategy



Rachel Tyrrell | Church Warden



Richard Lambert | Church Warden



Rosemary Brooks | PSO



# COULD YOU BE CALLED?

We are seeking to appoint a training Curate who is keen to come and play their unique part in an ambitious and exciting vision for Lincoln, Lincolnshire and beyond. Might you be the person God is calling?

Someone who is a passionate follower of Christ with a contagious faith and a deep love for people and God's church. You will have experience of the ministry of the Holy Spirit in your life and seek to see people set free to grow to their full potential as disciple making disciples.

Someone who will work closely with the Vicar, Associate Vicar, PCCs and Senior leadership team to support the development and growth of both churches in their mission to the parish, city, deanery and diocese in which they serve, You will assist firstly as a deacon and then as a priest partake in the priestly ministry of the parish, including preaching, leadership of services and occasional offices, pastoral care and serving those in need in our communities.

Someone excited to receive a broad training experience that will include working in and leading aspects of a specific ministry area suited to your gifting, passion and vocation. Someone hungry to learn from the experience of others and through being encouraged out of your comfort zone. Whilst being given opportunity to bring your insights, creativity and leadership to help shape things.

Someone committed to modelling our vision and values, recognising our own giving, service and patterns of prayer and worship and discipleship are as important as what we teach and preach.

Someone who is not afraid to take risks in seeking to cast vision, build from nothing, take risks and learn from failure as well as success.

You will have the opportunity to train in a context with both different urban contexts (city centre and parish) and different worshipping styles and traditions. (St. Swithin's & St. Faith's as well as opportunities to minister in different parishes in the deanery partnership)

Someone keen to play a full part in the staff team and in its' life of prayer, mutual support and work together. You will be expected and encouraged to work and to rest well, to be coached in your leadership and to be stretched personally, practically and spiritually





# ABOUT THE VICAR



*Rev. Canon Jim Prestwood is Vicar of St. Swithin's,  
Priest in Charge of St. Faith's  
& Partnership Dean for Lincoln Deanery Partnership*

After 15 years of working with youth and children in York and Tonbridge, I then trained for ordination at St. Mellitus College (London). I served my curacy in Tollington Parish, Finsbury Park, a graft from HTB. From this diverse and multi-cultural community, my wife, Vicky and I lead a planting team of 12 people to revitalise St. Swithin's Church in the city centre of Lincoln.

Ten years on, we are still learning how to follow Jesus and how to lead others. We have seen so many encouraging stories

of lives and communities being transformed by the love of God (as well as making several mistakes along the way- which hopefully we have learnt from!)

We are still deeply passionate about younger generations (including our own 3 children!) and more recently we are exploring and leading our church in to re-thinking inter-generational worship. I love seeing young leaders grow and be released into the things God has for them and enjoy geeking out a bit on resources exploring leadership, strategy and systems (!)

When not doing these things, as a family, we enjoy the outdoors - walking, camping, mountain biking and enjoying a good barbecue! I also enjoy music (my listening skills are better than my playing skills), football (again better at watching than playing) & good meal with friends or family (hospitality is important to us!)

# NEXT STEPS

## HOUSING

The Diocese of Lincoln has several properties that could provide housing for a curacy. A suitable property will be found for the trainee curate from either existing Diocesan housing or the rental market.

## PARISH VISITS AND INTERVIEWS

For further information, an informal chat about the role, or to arrange a parish visit, please contact the vicar, Rev. Jim Prestwood on 07875476102 or email [jim.prestwood@stswithins.org.uk](mailto:jim.prestwood@stswithins.org.uk)

**Applications close:** Applications open immediately and close once the right candidate is appointed.

**Parish visit:** Please feel free to visit us on any Sunday but if you are interested, we would like to arrange a more planned visit where accommodation and meals can be provided where required.

**Interviews:** To be confirmed. At Edward king House, Lincoln. LN2 1 PU

**Prior to interview:** We ask all candidates, prior to interview, to send a recording (or links to a recording) of 2 pieces of communication - 1 of which should be a sermon.

**At interview:** Candidates will be asked to give a 6 minute, 'worship for everyone' talk and present for 10 minutes on a topic related to Gen Z.

**Post start date:** Summer 2024



[stswithins.org](http://stswithins.org)  
[stfaithslincoln.org](http://stfaithslincoln.org)



@stswithinslincoln



@stswithinschurchlincoln

# A MESSAGE

## FROM THE BISHOP OF GRIMSBY

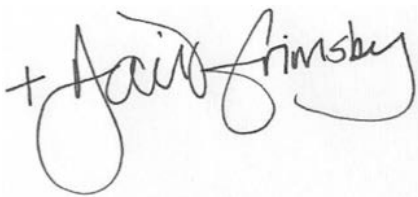
Our vision as a diocese is to grow in faithful worship, confident discipleship and joyful service. Our programme to resource the urban church is necessarily considered, strategic and detailed, but it ultimately serves the same diocesan vision: that God is worshipped, that our communities are served by the disciples of Jesus Christ, and that lives are transformed.

This programme addresses the need in our urban areas to significantly increase the church's reach and impact and will, I pray, contribute to the revitalisation of our urban communities.

As Curate, you will play your part in this programme of urban transformation, sharing in the leadership of St Swithin's: one of our three resource churches in the diocese and also playing your part in mission and ministry across the deanery partnership of Lincoln.

This comes at an important time for the diocese. At the current time, as is the case in many other dioceses, the Diocese of Lincoln is very actively exploring its model of stipendiary deployment, to better equip it for the missional task ahead. While this post is clearly based at St. Swithin's and St. Faith's, all ministry roles in the future will be exercised across a wider geographical area than parish alone, according to skills, gifts and experience, as a resource to these communities. As with all roles therefore, the Curate role will develop over time alongside this new model of ministry for the diocese.

We invite you to join with us on this exciting journey in our diocese and welcome your application.

A handwritten signature in black ink, reading '+ David Court', with a stylized flourish at the end.

**The Rt Revd Dr David Court**

Bishop of Grimsby

Strategic Lead for Mission & Resourcing the Urban Church

